

Notice

Dated: 10.10.2025

Sub.: Digital Life certificates for the year 2025 for Contributory Post Retirement Medicare Scheme for Executives (CPRMSE) beneficiaries.

Under Secretary to GoI, Ministry of Coal has enclosed D.O. letter No. 1(2)/2025-P&PW (H) dated 30.07.2025 issued by Secretary, Ministry of Personnel, Public Grievances & Pensions, Departments of Pension and Pensioners Welfare where in it has been communicated that a Nationwide Digital Life Certificate Campaign 4.0, coordinated by the Department of Pension & Pensioners' Welfare, is proposed to be held in November, 2025 for wider and deeper penetration of the endeavour of digital empowerment. The large scale Campaign will be executed in collaboration with –

- a) Public Sector Banks,
- b) India Post Payments Bank,
- c) UIDAI,
- d) Meity,
- e) Pensioners Welfare Associations and
- f) Stake holder departments of Ministry of Defence, Ministry of Railways and Department of Posts.

Accordingly all CPRMSE beneficiaries are informed that they can generate and submit the Digital Life certificates (DLCs) through Jeevan Pramaan Application. The process of DLC submission is attached herewith (Annexure 1).

In addition to above, CPRMSE beneficiaries can generate and submit the Digital Life certificates (DLCs) from designated Camps organised during the Campaign in

- a) Post Offices,
- b) Pension Disbursing Banks,
- c) Common Services Centres, etc.

In case of any difficulties, the PRB Cell of CIL (HQ) may be contacted over phone for beneficiaries of CILHQ. The contact number is 033-7110 4398 & 033-71104145

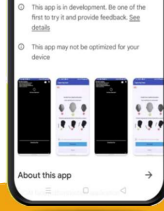
The date of submission of life certificates online starts from 1st November to 30th November 2025.

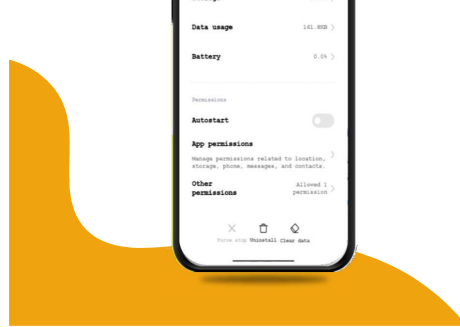
There is a special provision for beneficiaries aged 80 years and above to submit their Life Certificate in online mode from 1st to 31st October also.

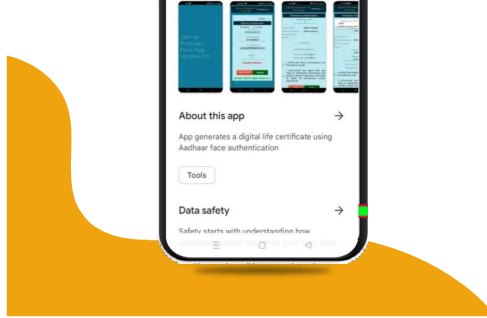
CPRMSE beneficiaries (both self, spouse & divyangjan, if applicable) are requested to submit Life Certificate through online mode as per Annex-A.

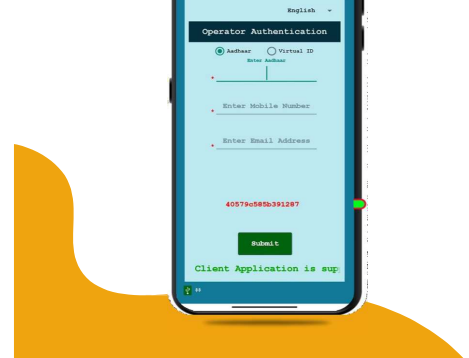
Encl: Annex-A

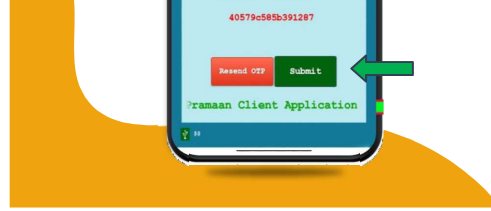
PRB Cell, CIL(HQ),
Premises No.4, MAR, Plot No. AF-III,
Action Area-1A, New Town,
Rajarhat, Kolkata-7001 63

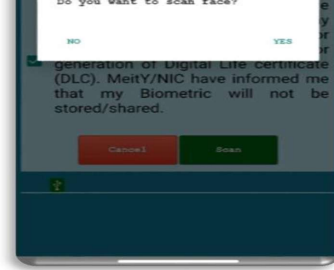
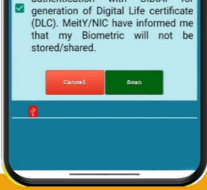


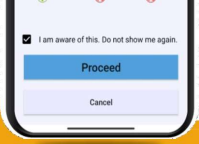


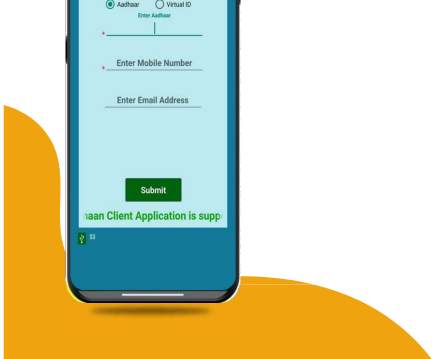












10. A permission to Confirm will appear on the screen.

Note: Similar process with same card number should be done for self, spouse & divyangjan, if applicable.

Full Member as an Author

Type of Pension: --Select Category--

Accounting Authority: --Select Authority--

Measuring Agency: --

Agency: --

PPO Number:

Account Number (optional):

Are Employee: ☐ YES ☒ NO

Are Marriage: ☐ YES ☒ NO

☐ I certify that above declarations are true and accurate.

I understand and agree that any false or misleading information will justify a denial of pension and shall be liable for disciplinary action against me.

☒

Cancel Submit

Confirm

Do you want to generate Digital Life Certificate(DLC) for any other person not entered above?

NO YES

